
Air Up

Pinuccio Borghonovo
2010



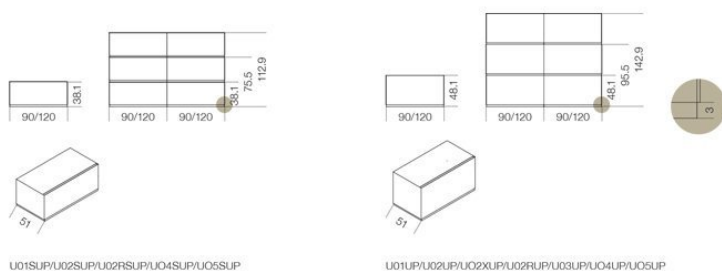
Air Up

Pinuccio Borgonovo , 2010

Sistema di mobili contenitori sovrapposti in legno rivestito in cristallo retroverniciato nei colori del campionario, nella versione brillante o satinata oppure in specchio extralight o specchio "grigio Italia". Base e distanziatori in legno laminato effetto pelle. Parti metalliche in alluminio anodizzato brill. Per composizioni a centrostanza è previsto lo schienale in cristallo retroverniciato. L'interno del mobile Air Up è in laminato effetto pelle.

Modular system of superimposed wooden elements covered by painted glass as per samples, in the bright or satin version or in extralight mirror or smoked "grigio Italia" mirror. Base and spacers in leather effect laminated wood. Bright anodised aluminium metal parts. For compositions as room divider, a painted glass back is available. The inside of Air Up is made of leather effect laminated wood.

Dimensioni / Sizes
Cm:
90 x 51 x 38.1h
90 x 51 x 48.1h
120 x 51 x 38.1h
120 x 51 x 48.1h





Cristallo / Glass

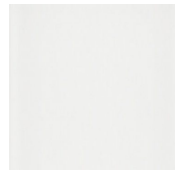
Specchio
Mirror



Specchio
"grigio Italia"
Extralight
mirror



Specchio
extralight
Grigio "Italia"
mirror



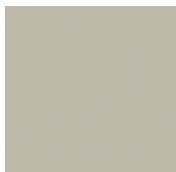
Bianco
brillante
Bright white



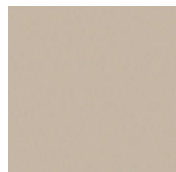
Bianco satinato
Satin white



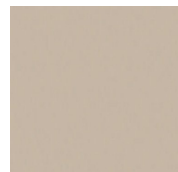
Cemento
brillante
Bright cement



Cemento
satinato
Satin cement



Champagne
brillante
Bright
champagne



Champagne
satinato
Satin
champagne



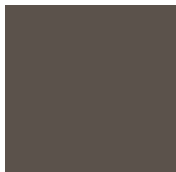
Cipria
brillante
Bright rose
powder



Cipria satinato
Satin rose
powder



Grigio beige
brillante
Bright taupe



Grigio beige
satinato
Satin taupe



Grigio umbro
brillante
Bright dark
grey



Grigio umbro
satinato
Satin dark grey



Blu grigio
brillante
Bright blue
grey



Blu grigio
satinato
Satin blue grey



Cadet blue
brillante
Bright cadet
blue



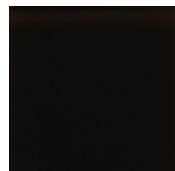
Cadet blue
satinato
Satin cadet
blue



Oliva brillante
Bright olive



Oliva satinato
Satin olive



Nero brillante
Bright black



Nero satinato
Satin black